

Farmland Auction

LANCASTER COUNTY, NEBRASKA



149.55 ACRES M/L

TUESDAY, NOVEMBER 25TH, AT 10 AM CST
At the Waverly Community Foundation Center

Farmland Auction

LANCASTER
COUNTY, NE

Mark your calendar for Tuesday, November 25th, at 10 AM CST!

UFARM Real Estate and Peoples Company are honored to represent the Marlo Burg Revocable Trust in the sale of 149.55 acres m/l of excellent non-irrigated Lancaster County cropland. The farm will be offered via live public auction at the Waverly Community Foundation Center with simultaneous online bidding available. This highly-tillable farm consists of 144.13 FSA cropland acres with an overall NCCPI of 57.3. The property also includes a 30'x50' Morton building in exceptional condition. The building has a full concrete floor and 220V electrical service with two 12'x12' overhead doors.

The farm has excellent access provided by both N. 134th Street and Mill Road. The farm is available for the 2026 crop season. Possession will be given at closing subject to the balance of the existing farm lease. Contact the listing agent for more details.



DIRECTIONS

From Waverly, NE: Travel west on Waverly Road to N. 112th Street, turn right or north onto N. 112th Street for one mile to Mill Road, then turn right or east for approximately 1.25 miles to the south side of the farm.

ADDITIONAL INFO

FSA Certified Cropland Acres: 144.13

Corn Base Acres: 72.05

Soybean Base Acres: 72.05

PLC Yield - Corn: 149

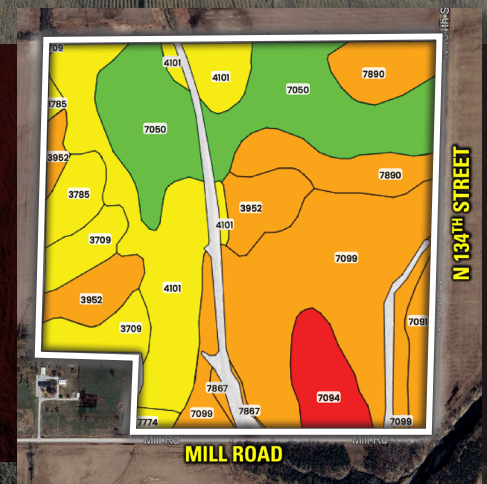
PLC Yield - Soybeans: 42

TILLABLE SOILS MAP

149.55
ACRES M/L

CODE	DESCRIPTION	ACRES	% OF FIELD	IA CSR2
7099	Zook silty clay loam	38.58	26.77 %	42
7050	Kennebec silt loam	30.02	20.83 %	94
4101	Littlesalt silty clay loam	25.01	17.35 %	51
7890	Zook silt loam	13.47	9.35 %	47
3952	Fillmore silt loam	11.28	7.83 %	48
3709	Crete silt loam, terrace	8.10	5.62 %	67
7094	Zoe silty clay loam	7.42	5.15 %	37
3785	Crete silty clay loam	4.48	3.11 %	66
7091	Wabash silty clay	3.88	2.69 %	40
7774	Colo-Nodaway silty loam	1.10	0.76 %	60
7867	Nodaway silt loam	0.78	0.54 %	48

AVERAGE: 57.3



SCAN THE QR
CODE TO THE LEFT
WITH YOUR PHONE
CAMERA TO VIEW
THIS LISTING ONLINE!

CHRIS SCOW | 402.434.4495 | Chris.Scow@PeoplesCompany.com

PeoplesCompany.com | Listing #18645